

POLAR BEAR TRIATHLON • DUATHLON



BRUNSWICK • MAINE

MAY 6, 2017

Athlete Guide

Version 1

Thank you to all our 2017 sponsors and partners!



**Centers for
Orthopaedics**
a division of Spectrum Medical Group
Experience in Motion

TABLE OF CONTENTS

Sponsors	1
Welcome Letter	3
Event Schedule	4
Pre-Race Information	5
Swim Wave Start Times	8
Venue Map and Information	9
Course Information and Maps	10
Aid Stations	14
Post-Race Information / Food Trucks	15
Results & Awards	16
Rules & Policies	16
Medical Services	21

Dear Athlete,

On behalf of TriME and Bowdoin College, we would like to thank you for signing up for the Polar Bear Triathlon/Duathlon. We are looking forward to seeing you on race day!

To help make your race experience a smooth and enjoyable one, we have provided a detailed Athlete Guide for you. Many of the important parts of the race are outlined, and it is to your benefit to read over the **ENTIRE DOCUMENT** before race day.

Please feel free to [contact us](#) at any time with any questions still not answered or concerns you might have. More information can also be found on the race website at www.Tri-Maine.com.

The Polar Bear has seen the best and worst of what May weather has to offer. The event will not be canceled for any reason other than severe conditions that pose extreme danger to athletes and volunteers. Race management reserves the right to alter the course in whatever way they deem is in the best interest of the athletes and volunteers. This includes, but is not limited to, shortening or changing the course, removing one of the sports, postponing the start, etc. There are no refunds in the case of weather-caused changes or cancellations. If canceled, the 2017 Polar Bear will not be rescheduled.

Volunteers are still needed for the Polar Bear. If you know someone who wants to be a volunteer, please have him or her [contact us by e-mail](#). All volunteers receive t-shirts, coffee, and snacks. Also be sure to thank the volunteers who are working the event. Without them, the race could never happen!

If you like the Polar Bear, and are interested in signing up for other races, please check out our [website](#) to learn more about the Sebago Lake Triathlon Festival at Point Sebago Resort, The Pumpkin Harvest Half Marathon in Bethel Maine, and the Wallis Sands Triathlon in Rye, NH!

The Polar Bear promises to be a fun and exciting event. We are looking forward to hosting athletes from across New England in this great competition. Thanks again for registering and we can't wait to see you on the 6th of May!

EVENT SCHEDULE

Thursday, May 4

- 4:00 p.m. Packet pickup hosted by Cyclemania begins (Portland location - for directions, [click here](#))
- 6:00 p.m. Packet pickup ends

Friday, May 5

- 4:00 p.m. Packet pickup at the Farley Field House, Bowdoin College
- 6:00 p.m. Packet pickup ends

Saturday, May 6

- 6:30 a.m. Packet pickup at the Farley Field House
- Transition area opens, bike check-in begins, body marking begins, and race number/timing chip pickup available at the Farley Field House at Bowdoin College
- 7:30 a.m. Packet Pick-up ends
- 7:30 a.m. Swim warm-up begins
- 8:00 a.m. Swim warm-up ends
- 8:00 a.m. Race number and timing chip pickup ends
- 8:00 a.m. Transition area closes
- 8:15 a.m. Opening remarks and **mandatory** pre-race meeting in the pool area. All athletes must be out of the Transition Area.
- 8:20 a.m. Final call for 1st wave participants
- 8:30 a.m. Triathlon 1st wave starts
- 9:00 a.m. Duathlon starts
- 11:00 a.m. Duathlon awards
- 11:30 a.m. Overall Awards Ceremony

PRE-RACE INFORMATION

Packet Pickup

Before you can compete in the 2017 Polar Bear, you must sign-in and pick up your official race packet. There are three different times that you can do this. We **highly encourage** you to pick up your race packet on Thursday or Friday (especially if this is your first triathlon), both for your own peace of mind and so that we can figure out any issues that may arise. Directions to the race venue are available online on the [Bowdoin website](#).

BRING YOUR PHOTO ID WITH YOU! YOU ARE REQUIRED TO SHOW IT WHEN YOU PICK UP YOUR PACKET. NO ID, NO RACE.

Every participant must present his or her photo ID at packet pickup. If you are an annual member of USA Triathlon (USAT), you **MUST** present your USAT card **AND** a photo ID. If you forget, you will be charged for a one-day membership (\$15). Not all members of a relay team must show up at the same time. Each member will be given his or her own packet. If any one member of the team does not check in or sign the USAT waiver, the team will not be allowed to participate. **Additionally, STUDENTS must present their valid student ID to pick-up their race packet.**

You may NOT have someone else pick up your packet. YOU MUST PICK-UP YOUR OWN PACKET. EACH RELAY MEMBER MUST PICK UP THEIR OWN PACKET, youth athletes as well.

You will receive a race packet - which will include race information, a run number, a bike frame number, a helmet number, an official Polar Bear t-shirt, and safety pins. Please double-check that you have everything you need for the race before you leave packet pick-up.

Chip Timing

The race is being chip timed by [All Sports Events](#). You will need to pick up your chips **on race morning**, inside the Farley Field house.

Timing chips will be attached to a Velcro ankle band that you will attach to your LEFT ankle and wear for the duration of the race. Please return your chip to

volunteers just past the finish line. Athletes are responsible for their chip; a \$50 fee will be associated with any lost chips.

Relay hand-off will take place at your designated bike rack and involve passing your chip on to your teammate.

If you must drop out of the race, you will need to report to the timing trailer as DNF (and to let us know that you are safely off the course). You will need to return your chip at this time.

Transition Area, Body Marking, and Pre-Race Meeting

The Transition Area will open at 6:30 a.m. and will close SHARPLY at 8:00 a.m. This area is for athletes only. Body marking will be available at 6:30 a.m. inside the Farley Field House for all athletes right next to chip distribution. **All athletes, including relay members, must be body marked to participate.**

Warm-up in the pool will be available from 7:30 a.m. - 8:00 a.m. After this time, competitors must clear the pool and make their way into the stands. There will be a **mandatory pre-race meeting** at 8:15 a.m. in the pool, so you must be in the stands at this time. The first wave will start at 8:30 a.m. There will be a running clock on the scoreboard in the pool, so you will know exactly how much time you have until your designated start.

Race Numbers

You are required to display your race number at all times while competing. This is both for your safety and so that officials can also identify your numbers and your bib can be properly recorded at the finish. Also, it allows the photographers to identify your pictures.

During the swim (Triathlon) or first run portion (Duathlon), your number must be visible. During the bike portion, your number must be displayed on your bike (clearly visible from the left side) using the specific bike frame number you are given at registration, and your bike helmet number must be displayed on the front of your helmet. During the run, you must wear your race number on your front. This is especially important for the finish.

If you are planning to wear layers and take them off as you go, find a way of displaying your number the entire time. A good option is to use a race number belt that you can clip and unclip very easily. Another idea is to pin the number to your running shorts and pull them over whatever you were wearing up to that point. The worst thing that you could do is pin your number to the outside of a jacket and then leave that jacket in the transition area (because you'll have to go back and get it before you finish!).

Right and Wrong displays of numbers



SWIM WAVE START TIMES

Please note no more swim wave changes can be made. The Swim Director will fill in open spots in waves if available on race morning.

Swim wave start times will be posted next to the race packet pickup table and throughout the pool area. You will find out what your scheduled start time is at race packet pickup. You should remain in the stands until 2-3 minutes before your scheduled start time

Your official race time begins when your assigned wave goes off, whether you are in it or not. We cannot wait for athletes who are delayed getting to their lane. So please pay attention! You have been assigned to your wave based on your reported swim time. The actual start times of the waves may change as the race goes on, so look at the large display board in the upper corner of the pool area for time updates. The approximate breakdown of waves is as follows:

8:30 - Wave 1 (20 min) * Slowest wave of the day

8:50 - Wave 2 (16 min)

9:06 - Wave 3 (7 min) * Fastest wave of the day

9:14 - Wave 4 (8 min)

9:23 - Wave 5 (9 min)

9:33 - Wave 6 (10 min)

9:44 - Wave 7 (11 min)

9:55 - Wave 8 (12 min)

10:08 - Wave 9 (12 min)

10:21 - Wave 10 (14 min)

9:00 - Duathlon

PLEASE NOTE THIS IS SUBJECT TO CHANGE. WAVE ASSIGNMENTS WILL BE PUBLISHED ONLINE AT WWW.TRI-MAINE.COM AS SOON AS THEY ARE FINALIZED.



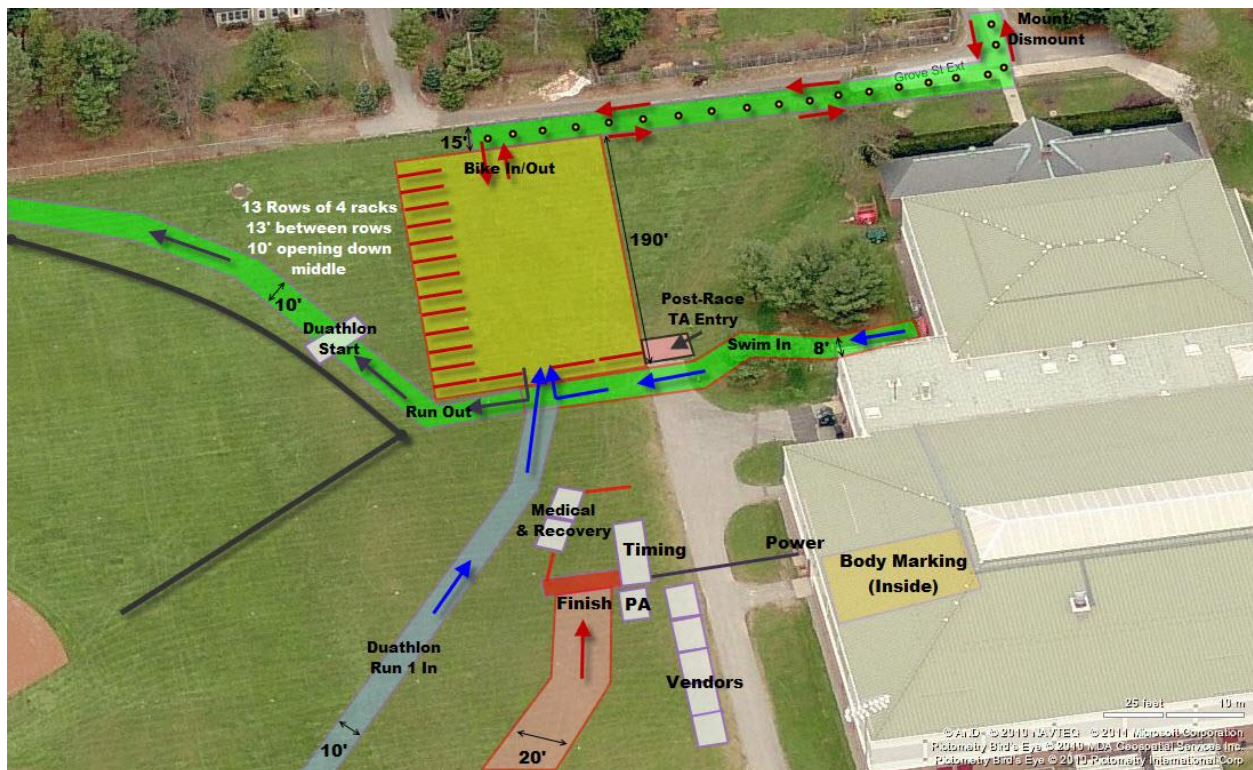
VENUE MAP AND INFORMATION

Farley Field House at Bowdoin College, Brunswick, ME 04011

Directions - For directions to Bowdoin's campus, go to [Bowdoin College website](#).

Parking - Participants and spectators should plan to park in the Farley Fieldhouse parking lots. However, if that fills to capacity, you should park along the following roads: Longfellow, South Street, and Park Row. **Please do not park on Harpswell Road/Rte. 123, as this is part of the bike course.**

Bathrooms - The Farley Field house has Men's and Women's locker rooms downstairs as well as restrooms upstairs. There will be Port-o-Putties available outside near the finish line as well.



COURSE INFORMATION AND MAPS

Swim

The swim will take place in the Greason Pool, which has sixteen (16) 25-yard lanes. Each lane will be split between two competitors. There will be up to ten (10) waves, beginning at 8:30 a.m.

Once the race has begun the Transition Area will be CLOSED - even to athletes who are not starting until one of the later waves. All athletes must be set up, body-marked, and in attendance at the pre-race meeting in order to compete. Late arrivals will be prohibited from entering Transition, for safety and timing purposes. Remember that once you have picked up your chip, you MAY NOT enter the TA or your time will begin.

When you arrive at your lane, sign-in with your lane's designated volunteer. Listen for the command to enter the water, which will be given about 30 seconds before your wave's scheduled start time. Once in the pool, you must hold onto the wall until the start signal goes off. This is an in-water start - **there is no diving!** It is required that competitors stay on their assigned half of the lane during the entire swim. There is no rule against drafting, but you must remain on your side. Both flip-turns and open turns are legal.

Each lane will have a volunteer counter at the start end that will be keeping track of your progress. He or she will notify you before your last length by sticking a red signal in the water. **However, you are responsible for keeping track of your progress** - every year, there are always athletes who swim an extra 50 yards. Remember that you finish at the opposite end from where you started (21 lengths = 525 yards!). There is a chance that the wave behind you will start before you finish your final lap, in the interest of moving the race along.

When you climb out of the pool, be aware of other athletes making their way to transition. Follow the carpeting towards the rear exit of the building. Do not run at any point when you are in the pool complex, as it is a major safety hazard. The deck will be carpeted, but can still be very slippery. If you wish to have a towel or eyeglasses for the end of the swim, you must leave it against the building wall at the finish end of the pool. You cannot leave any items at the end of your lane.

Swim caps are not mandatory.

As stated on the website, the time cut-off for the swim is 20 minutes. If you have not completed the distance in that time you will be required to exit the water at the nearest end of the pool. You will be allowed to continue the race - however, your time will be considered "unofficial" and you will not be eligible for awards. In previous years, no one has gone over the cut-off time. If you are concerned that you may not finish the swim in less than 20 min, please [contact Jenna](#) ASAP.

Run #1 (Duathlon)

Duathletes will gather at the starting line, (next to the Transition Area) at 8:50 a.m. and will be organized into two waves, based on gender. The first (all-male) will begin at 9:00 a.m. and the second (all-female) will start approximately 1 minute later. The run is the same course as the triathlon, except it doesn't include the second lap of the trail. It is marked with flags and signs. All course maps can be found on the [race website](#). When you run along Maine Street, please stay on the sidewalk as much as possible. Do not run in the road for your own safety. There will be volunteers along the route to make sure that you are staying on-course and not cutting corners. There will NOT be a water station on the first run of the Duathlon. You will enter the Transition Area from the same end as the triathletes (opposite where you leave on the bike). Be aware that some of the triathletes may be dazed from the swim, so pay attention!

Transition Area

You will be assigned to a specific bike rack based on your race number. If you put your bike in the incorrect spot, it will be moved to the correct spot; and though we will try to notify you, it can't be guaranteed. You cannot use balloons to mark your spot because of the danger they pose when there is wind. **No one is allowed into the Transition Area except athletes and race staff/volunteers at any time!**

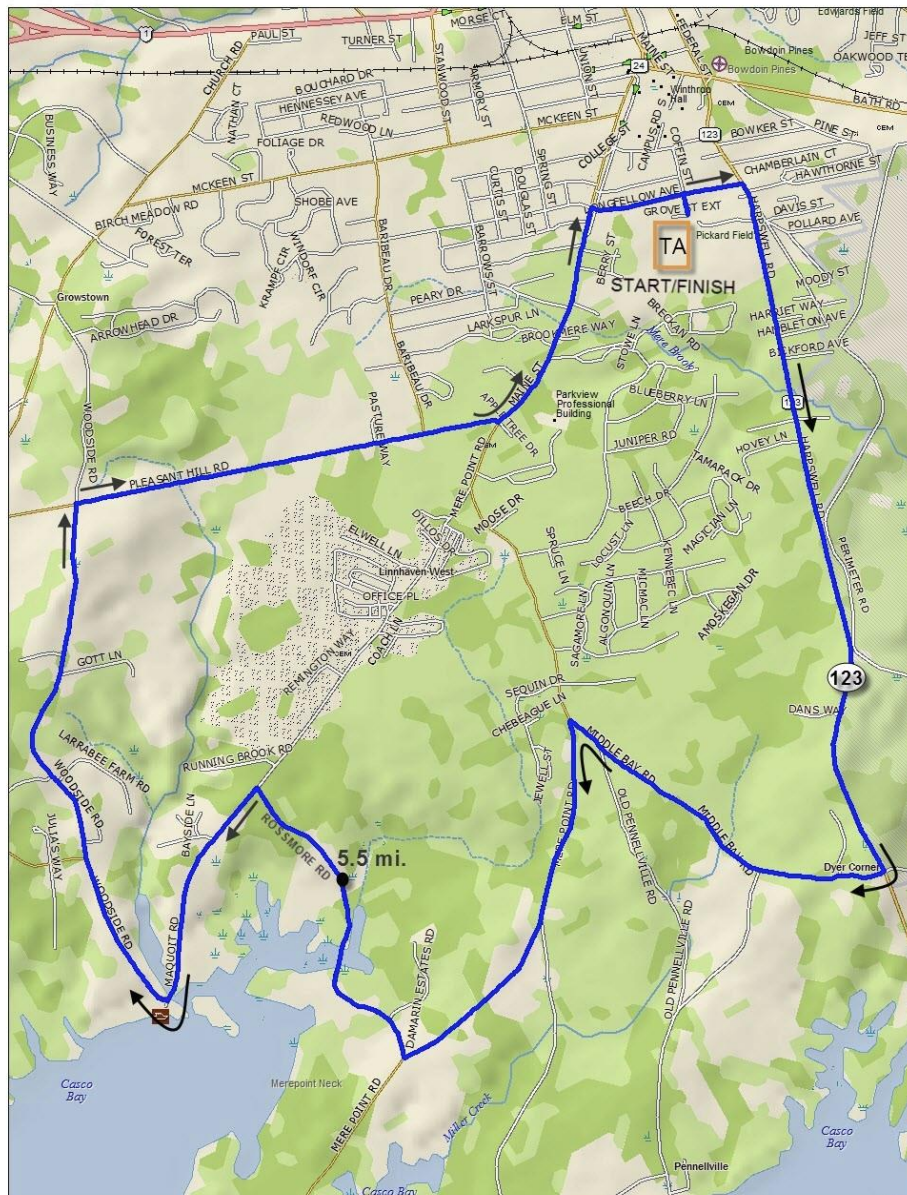
Since the Transition Area has such high traffic, you must be aware of other athletes at all times. Related to this, be sure to respect other competitors' space. Please do not move anyone else's things without permission and do not let your belongings take up more than your fair share of space (typically a couple of feet on one side of your bike). When you are ready to begin the bike leg of the race,

exit out the opposite end of the TA from where you entered. You shouldn't mount your bike until you have left Transition and reached the designated mount/dismount line.

You MUST have your helmet buckled before you get on your bike. If you mount your bike without your helmet fastened on your head, you risk disqualification by an Official. The same is true if you take your helmet off before you dismount your bike. When you return from the roads, you must re-rack your bike in the same spot where it was originally racked. It is a very good idea to know the flow of the Transition Area before the race begins.

Bike

Polarbear Tri/Duathlon Bike Course - ~11 Miles



You can view a PDF of the bike course map, elevation profile, and cue sheet [here](#). The 11-mile bike course is relatively flat, with some rolling hills. It is a loop course on country roads, so there are not many cars. The roads will be open to traffic but Brunswick Police and volunteers will control every major intersection. It is the police's discretion as to whether bike traffic can proceed safely, so do not go through a staffed intersection without police or volunteer approval. Please pay attention to the course signs, arrows spray-painted on the road, and volunteers warning you about upcoming changes in speed and bumpy/uneven pavement. You must obey the volunteers/police, for your own safety and that of everyone else in the race.

Give plenty of space between yourself and other competitors, especially going around tight corners. **Drafting is illegal during the entire bike portion of the race.** You are responsible for knowing what drafting means (it is described in the rules section of the USA Triathlon website - www.usatriathlon.org). Stay as far right on the road as possible (for your own safety) and obey all rules of the road regarding cycling. The reality of Maine in May after a long winter is that some of the roads might not be totally clear of sand, so be alert and avoid it. We will do our best to sweep the corners, but please pay attention.

There are no water stations on the bike course. When you finish the ride, you must dismount your bike on the pavement before the mount/dismount line, and make your way onto the grass before getting to the Transition Area. Remember - rack your bike back in your assigned spot!

All athletes must complete the bike course by 12 Noon. If you are still on-course at that time, you will be picked up by the sweep vehicle and brought back to the Transition Area. You will be allowed to finish the race, but your time will be "unofficial" and you won't be eligible for any awards. Again, this is in the best interest of the town, police, volunteers, and other athletes.

Run



You can view the [run course map here](#). The course is 3 miles with both on- and off-road sections. All course maps can be found on the race website (www.Tri-Maine.com). Do not run in the road on Maine Street - please stay on sidewalk! There will be some volunteers around the route to make sure that you are staying on-course and not cutting corners. Follow the volunteers, signs, arrows, and flagging to stay on-course.

PLEASE NOTE: The run has TWO laps through the woods. It will be well marked with signs, flagging, and fencing, but you are still responsible for knowing the course! Every year, we have 1 or 2 athletes who only do 1 lap, please make sure you do both laps!

Photographs and Videos - Race photographs will be taken on course and at the finish line by our photographers. Photographs will be available following the race the following week. They will be posted online and allow a **FREE** downloads of all photographs courtesy of TriME and All Sports Events! A link will be posted on www.tri-maine.com

AID STATIONS

Water and Gatorade will be available at approximately Mile 1 and Mile 2 of the run course and at the finish line.

POST-RACE INFORMATION

There will be post-race snacks available for all competitors in the post-race area.

Makers Mug will join us this year starting at 7am with coffee, tea and breakfast goodies available for purchase, so don't fret about that coffee, they'll have you covered!

YUMMY!, Brunswick's very own moving bakery will join us as well for great baked goods and yummy (see what we did there) bites

Retrieving gear from the transition area

We understand that athletes want to retrieve their bike and gear after the race. We also want to respect those participants who started in later waves. We will allow athletes who have finished the race a chance to get gear. Each group of Athletes can check-in with the Transition Area Coordinator and enter to QUICKLY retrieve gear. The TA coordinator controls the number of athletes in Transition, so you may have to wait until it is deemed safe to enter. PLEASE BE RESPECTFUL OF THE TA COORDINATOR and other athletes. We cannot guarantee you will be able to retrieve your gear before the last athlete finishes the bike portion of the race.

RESULTS AND AWARDS

Unofficial results will be displayed in the *All Sports Events* Results Center at the race. With chip timing, you will receive five different split times: swim (includes run from pool exit to transition area), Transition 1, bike, Transition 2, and run.

Live and searchable results will be available during the race. Click [HERE](#) to view live results! Or visit www.tri-maine.com

There will be awards for the top three men and women overall, the top three finishers in each age group, the top relays, students, Bowdoin alumni, and Bowdoin staff. You will be assigned to an **age group based on your age as of December 31, 2017**, so if you are going to turn 50 at any point in 2017, you will race in the 50-54 age group. Age groups are every 5 years male and female starting at 19 and under and going up to 70+.

RULES AND POLICIES

A Message regarding USA Triathlon Rules to all age-group competitors...

Welcome to this USA Triathlon sanctioned event. You are racing under the USAT Competitive Rules. In order to minimize misunderstandings on race day, we hope you will take the time to read the following summary of the Position Violations, which you know as the drafting rules.

We have reduced the Position Rules to the following concepts, which everyone can remember:

Ride on the right side of your lane.

Keep three bike lengths between yourself and the cyclist in front of you.

Pass on the left of the cyclist in front, never on the right.

Complete your pass within 15 seconds.

If passed, you must drop completely out of the zone, to the rear, before attempting to re-pass. Remember you are racing in a USA Triathlon sanctioned event and there are officials on the course to ensure fairness in the competition. There will be **NO WARNINGS** if you commit a foul during competition. Triathlon is an individual event and you must take personal responsibility to understand the rules and avoid penalties. At the end of the race all citations by the marshals are reviewed by the officials who then decides if a penalty should be assessed. The officials ruling is final in the case of Position Violations and there are no protests or appeals of Position penalties. Marshals commonly cite the following violations:

Position– riding on the left side of the lane without passing.

Blocking – left side riding and impeding the forward progress of another competitor

Illegal Pass – passing on the right.

Overtaken - failing to drop back three bike lengths before re-passing

Drafting – following a leading cyclist closer than three bike lengths and failing to pass within 15 seconds.

Though Position Violations carry a time penalty for first offense, two citations will result in an additional penalty and if you are cited for three violations, you will be

disqualified. Be sure to check the penalty sheet before you leave the race site and have a chat with the officials if you have any questions.

Make sure your helmet is a CPSC approved model. All helmets legally sold in the US are CPSC approved but if you purchased your helmet in a different country it might be illegal for use in sanctioned events.

While on your bike, always have your chinstrap securely fastened - before, during and after the event! The chin strap rule is easy to follow, so don't forget – that's a DQ!

Wear your race numbers, don't leave your trash on the course, and don't carry or use any portable audio devices.

Remember to treat other athletes, volunteers, and officials with courtesy and consideration. Failure to do so is called Unsportsmanlike Conduct and you will be disqualified.

All that being said, we hope you have a great race, lots of fun, and achieve all your goals.

COMMONLY VIOLATED RULES & PENALTIES

1. Helmets:

Only helmets approved by the US Consumer Product Safety Commission (CPSC) may be used in USAT sanctioned events. Helmets must be worn at all times while on your bike. This means before, during, and after the event.

Penalty: Disqualification

2. Chin Straps:

Chin straps must be fastened at all times when on a bicycle. DO NOT unbuckle your chin strap unless you are off your bicycle.

Penalty: Disqualification on the course; time penalty in transition area only.

3. Outside Assistance: No assistance other than that offered by race and medical officials may be used. Triathlons and duathlons are individual tests of fitness.

Penalty: Time penalty

4. Transition Area:

All equipment must be placed in the properly designated and individually assigned bike corral. The wheel of the bicycle must be down on the side of the assigned space. All participants must return their bicycles to an upright position in their designated bicycle corral. No person shall interfere with another

participant's equipment or impede the progress of another participant. All bar ends must be solidly plugged. No participant shall bring ANY glass containers into the transition area.

Penalty: Time penalty or disqualification

5. Drafting:

Drafting--keep at least three bike lengths of clear space between you and the cyclist in front. If you move into the zone, you must pass within 15 seconds.

Position--keep to the right hand side of the lane of travel unless passing.

Illegal Pass--cyclists must pass on the left, not on the right.

Blocking--riding on the left side of the lane without passing anyone and impeding other cyclists attempting to pass.

Overtaken--once passed, you must immediately exit the draft zone from the rear, before attempting to pass again.

Penalty: Time penalty

6. Course:

All competitors are required to follow the prescribed course and to stay within all coned lanes. Cutting the course is an obvious violation and going outside the course is a safety issue. Cyclists shall not cross a solid yellow center line for ANY reason. Cyclists must obey all applicable traffic laws at all times.

Penalty: Referee's discretion, time penalty or disqualification

7. Unsportsmanlike-Like Conduct:

Foul, harsh, argumentative or abusive language or other unsportsmanlike conduct directed at race officials, USA Triathlon officials, volunteers, spectators or fellow athletes is forbidden.

Penalty: Disqualification

8. Headphones:

Headphones, headsets, walkmans, ipods, mp3 players, or personal audio devices, etc. are not to be carried or worn at any time during the race.

Penalty: Time penalty

9. Race numbers:

All athletes are required to wear race numbers at all times during the run. Numbers must be clearly visible at all times. Numbers may not be altered in any way that prevents a clear identification. **DO NOT transfer your number to any other athlete or take a number from an athlete that is not competing.**

Penalty: Time penalty for missing or altered number, Disqualification and one year suspension from membership in USAT for transferring a number without race director permission.

10. Abandonment:

All personal equipment and belongings taken out onto the course must stay on the athlete the entire time. No garbage, clothing, etc. shall be thrown on the course.

Penalty: Time penalty

Variable Time Penalties

Distance Category	1st Offense	2nd Offense	3rd Offense
Sprint	2:00 minute	4:00 minutes	Disqualification
Intermediate	2:00 minutes	4:00 minutes	Disqualification
Long	4:00 minutes	8:00 minutes	Disqualification
Ultra	6:00 minutes	12:00 minutes	Disqualification

For a complete list of rules, please refer to the most up to date USA Triathlon Competitive Rules at:

<http://www.usatriathlon.org/about-multisport/rulebook.aspx>

Policies

- ONLY ATHLETES, STAFF, and DESIGNATED VOLUNTEERS are allowed in the Transition Area at any time. NO EXCEPTIONS.
- After the race, athletes may access the transition area to retrieve items from the special entrance on the corner of the TA closest to the pool - NOT at the bike in/out or swim in/run out. Athletes must take no more than two minutes to collect and retrieve gear - any longer and they will be asked to leave by volunteers.
- When exiting, athletes must show proof that their race number matches their bike number. No one will be allowed to exit the TA with someone else's bike,

unless there is a medical or emergency reason, or special arrangements have been made.

- The coordinator has discretion as to how many athletes may enter the TA at a time. Any athlete that enters without permission will be immediately removed and not allowed back in until everyone else has gone through.
- Any athlete that interferes with the progress of a racer, or is disrespectful to staff, volunteers, will face penalties and/or removal from the TA.

Please remember that these rules are in place for the best interest of athletes and volunteers. We recognize the unique nature of this event, in terms of how long it takes, and want to do everything we can to make everyone's experience positive. Please help us by showing respect to your fellow participants and all of the staff and volunteers.

MEDICAL SERVICES

Emergency.... Call 911

We are proud to announce that OA Centers for Orthopaedics will be providing medical services at the 2017 Polar Bear, and that the City of Brunswick Emergency transportation will be providing medical transport services.

If you have a small first aid concern before or during the race (i.e., blisters, sore muscles, cuts), you can use the designated medical station, which will be staffed by OA medical personnel. There will be ice and basic first aid equipment there. For bigger emergencies, a medical director and ambulance will be on site.

Volunteers and police who are in close contact with medical services will monitor the bike route. The nearest hospital is about a mile from campus.

If you have any pre-existing condition that the medical team should know about, please make them aware before the race. Please e-mail any concerns or information to jenna@tri-maine.com.

Enjoy the Race!